



For Lease

Approx. 1,500 SF / 5 Office Suites available

– 5 office suites located on the 2nd Floor:

- Office 210 (approx. 300 SF)
- Office 207 (approx. 230 SF)
- Office 205 (approx. 330 SF)
- Office 203 (approx. 330 SF)
- Office 201 (approx. 320 SF)

– Rental Rate: \$400 per suite

**49 Ash Street
Lewiston, ME**

Frank O’Conner
+1 207 773 7100
foconnor@dunhamgroup.com

Tim Kastens
+1 202 719 5749
Tim.kastens@am.jll.com

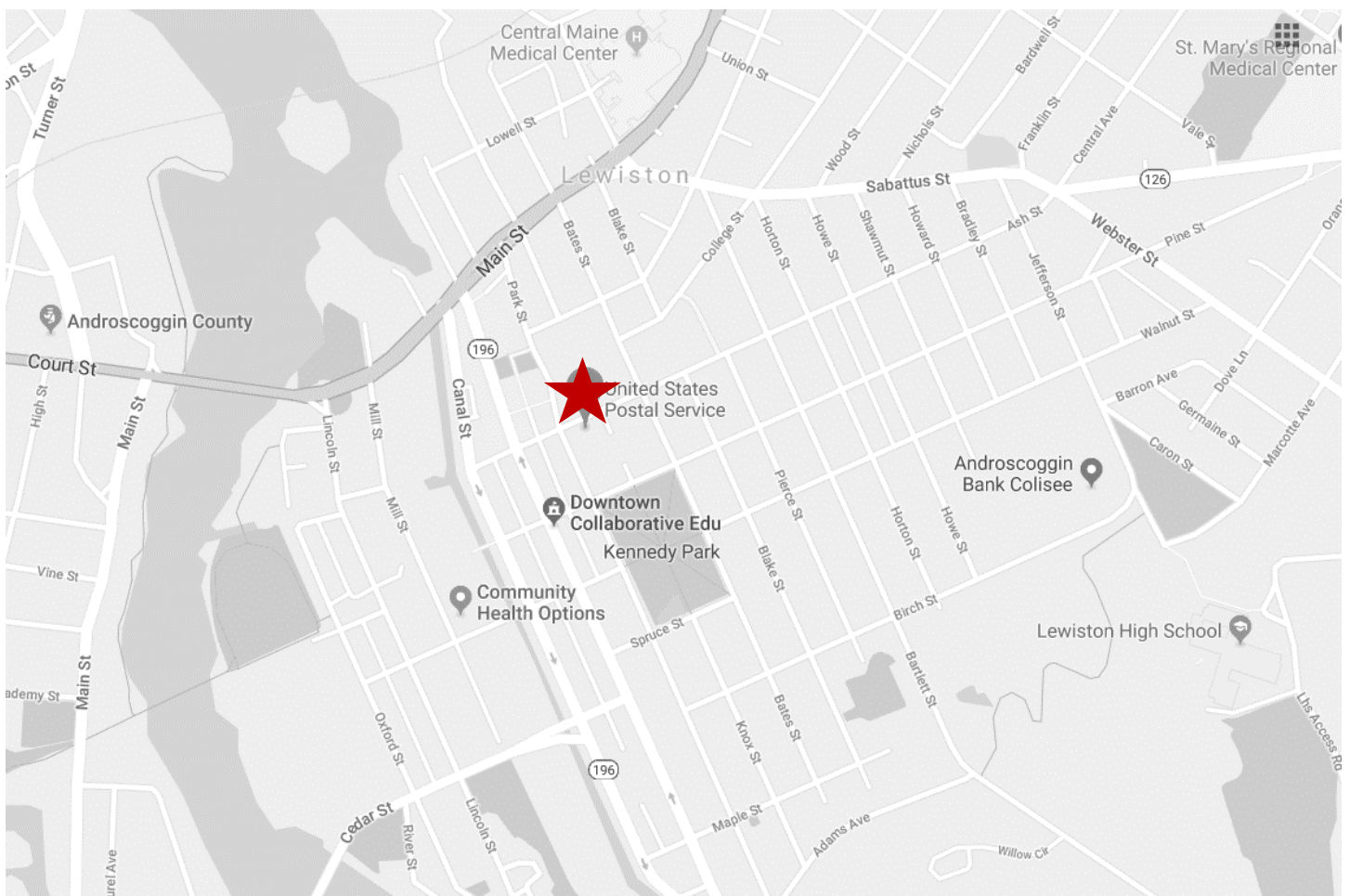
Adam Karaczynski
+1 212 220 4116
Adam.karaczynski@am.jll.com

Disclaimer

2017 Jones Lang LaSalle IP, Inc. All rights reserved. All information contained herein is from sources deemed reliable; however, no representation or warranty is made to the accuracy thereof.



Building Location



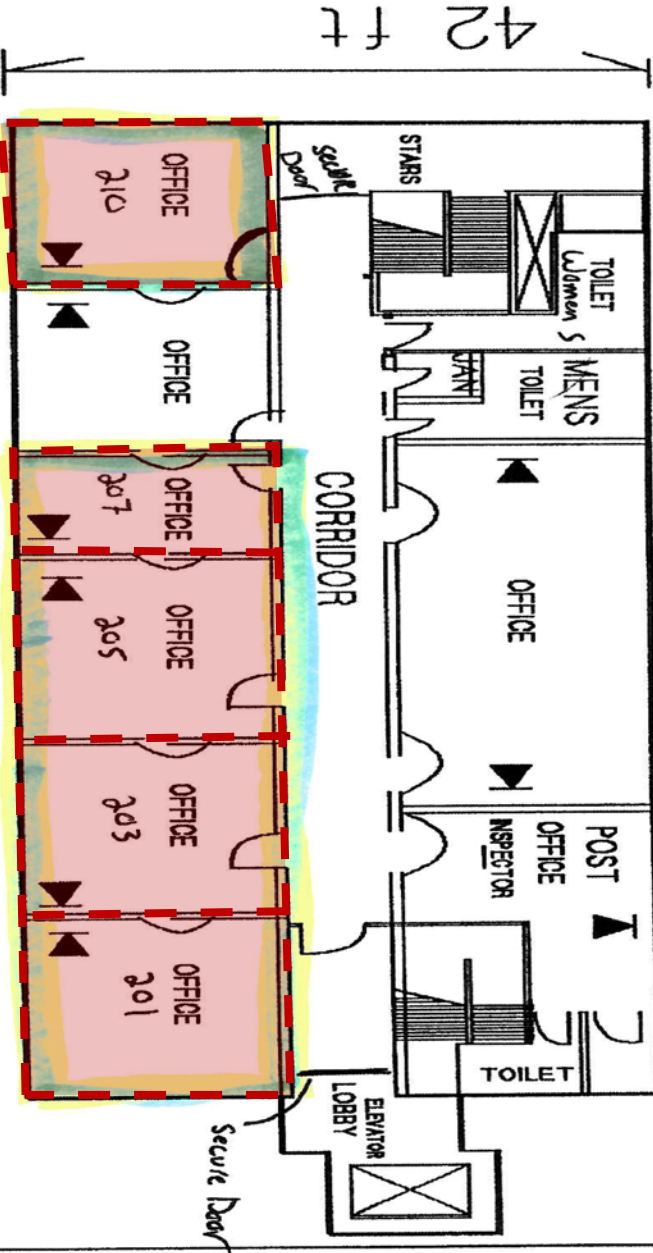
Floorplan

LEWISTON ME. 04240

490ASH STREET

2nd FLOOR

112 ft



 = Vacant Space