



For Lease

Historic Glendale Post Office Building

- Suite 212/217: 1,355 sf; available immediately
- Suite 204/207: 610 sf; available immediately
- Asking Rate: **\$1.50** per square foot; Full Service Gross
- Parking: multiple city lots adjacent to the Building

**313 E Broadway,
Glendale, CA**

Gil Canton
+1 818 736 4972
gil.canton@am.jll.com
Lic. 01279519

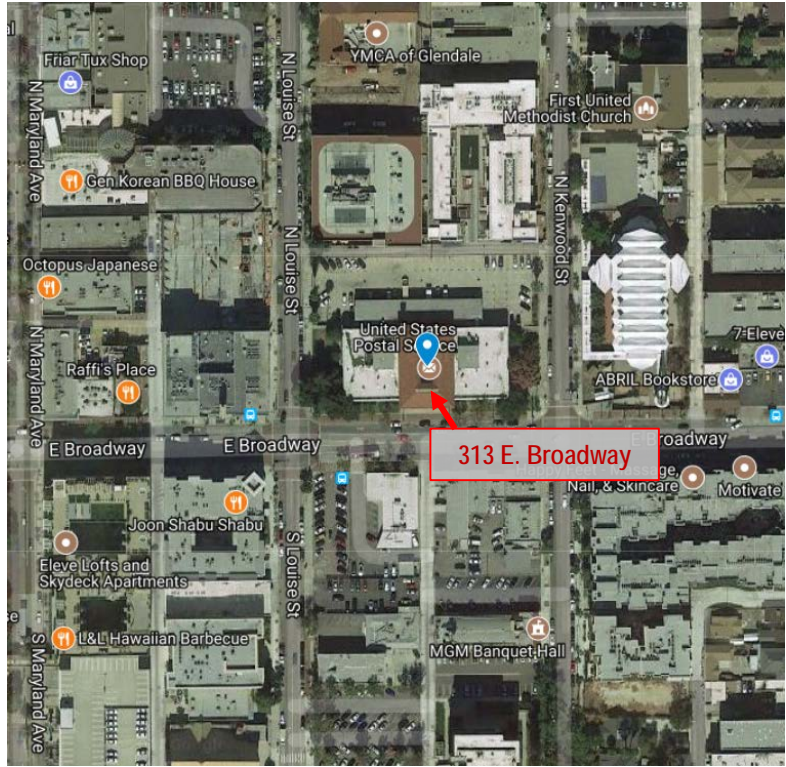
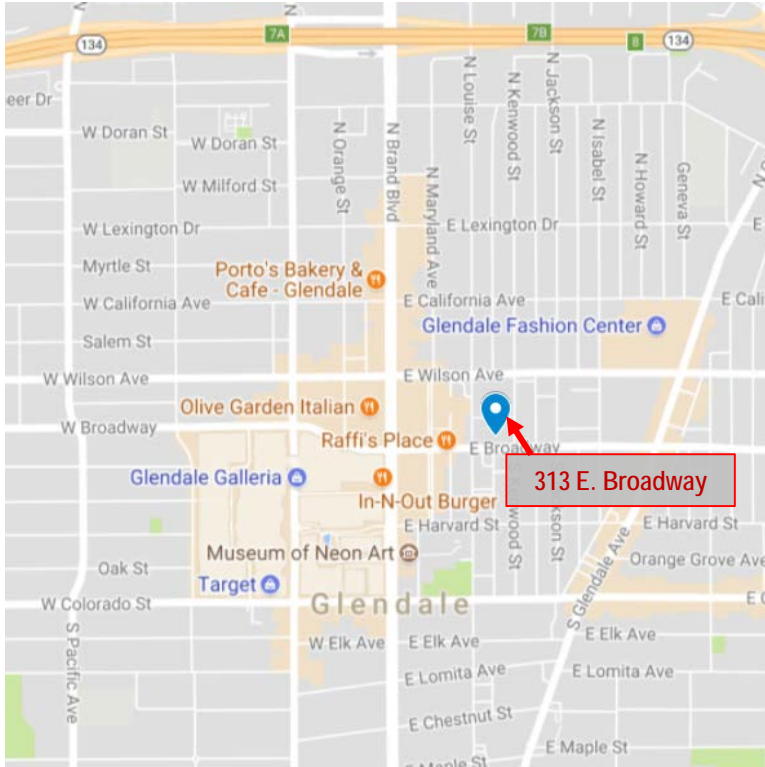
-
- Prominent Broadway location
 - Excellent freeway access
 - Numerous restaurant and retail amenities within two blocks of the Building
 - Tremendous new residential developments within walking distance including the “Laemmle Lofts” and “Elevé Lofts”

Disclaimer

2017 Jones Lang LaSalle IP, Inc. All rights reserved. All information contained herein is from sources deemed reliable; however, no representation or warranty is made to the accuracy thereof.



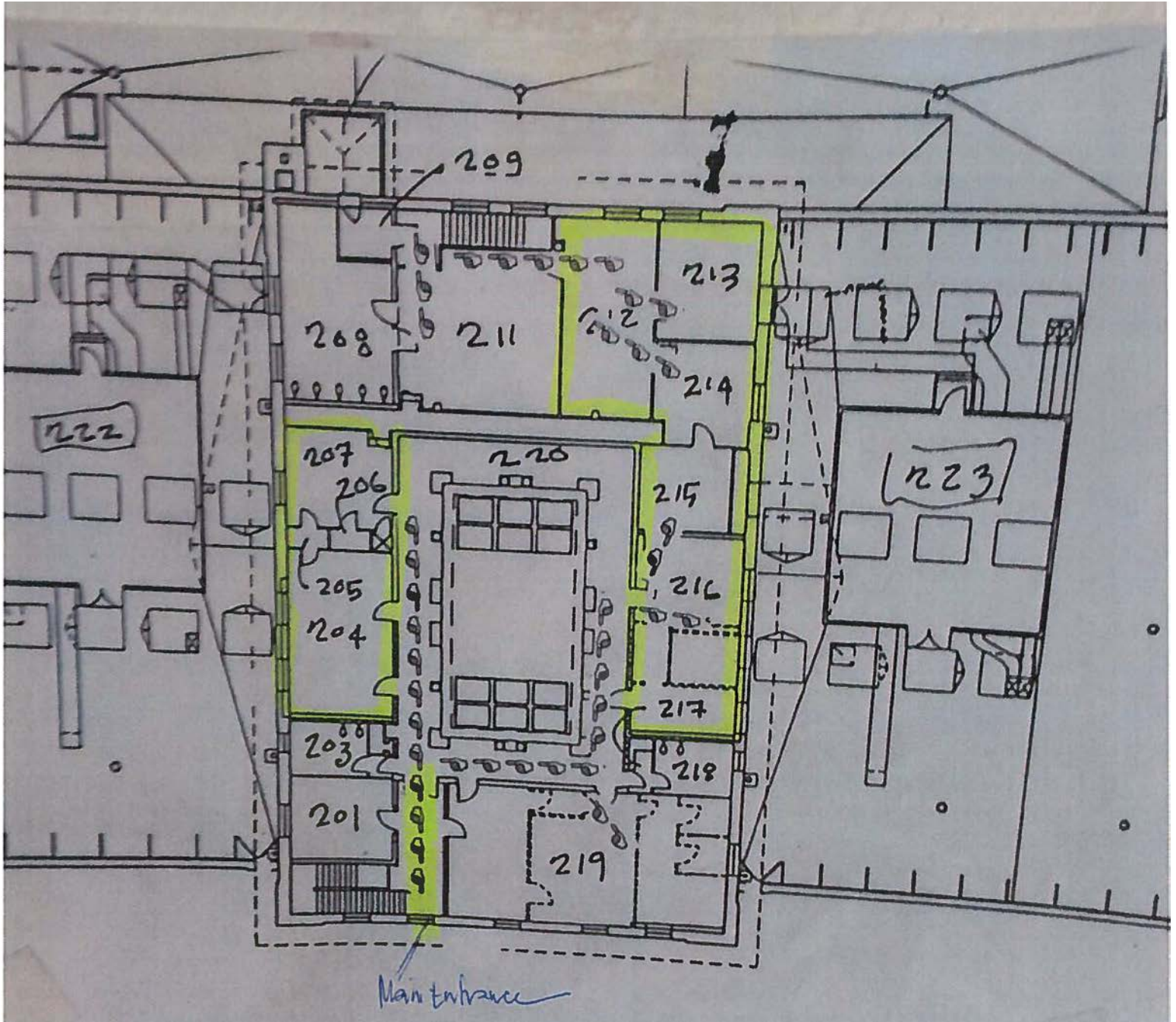
Building Location




Interior Photos



Floorplan – 2nd Floor



 = Vacant Space