



AVAILABLE TO LET

JBC 3, CLUSTER Y, JLT

Jumeirah Lake Towers, Dubai - United Arab Emirates, United Arab Emirates

An Opportunity to Acquire Office Space in JLT, Cluster Y, JBC3 - Units can be connected to create larger units - Flexible sizes with affordable prices

Jumeirah Business Centre 3 is a commercial tower project which is primarily located within the emerging free zone district in Dubai, Jumeirah Lake Towers. It has a total of 39 floors offering amazing views of Jumeirah Heights, Jumeirah Islands, and the two world class golf courses including the Montgomerie and The Emirates Golf Course.

- Views of Landmarks such as Burj Al Arab, and The Palm Jumeirah
- Grand lobby with 5 floor high atrium ceiling and marble finishing
- Retail area within the building
- Basement parking
- Male and female prayer rooms
- Gym facility
- High speed elevators
- Cafes and restaurants
- CCTV cameras
- 24 Hour security
- Valet services

Rent **AED78.00 to AED82.00 PSF**

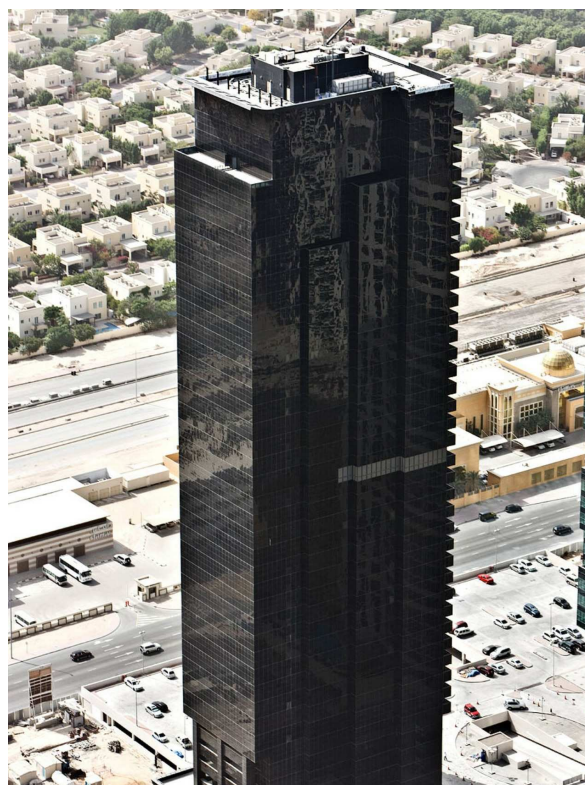
Building type **Office**

Sizes **1,032 to 7,259 Sq ft**

Marketed by: JLL Dubai

For more information please visit:

<https://realla.co/jbc-3-cluster-y-jlt-jumeirah-lake-towers>



Commercial tower project which is primarily located within the emerging free zone district in Dubai, Jumeirah Lake Towers

Amazing views of Jumeirah Heights, Jumeirah Islands, and the two world class golf courses

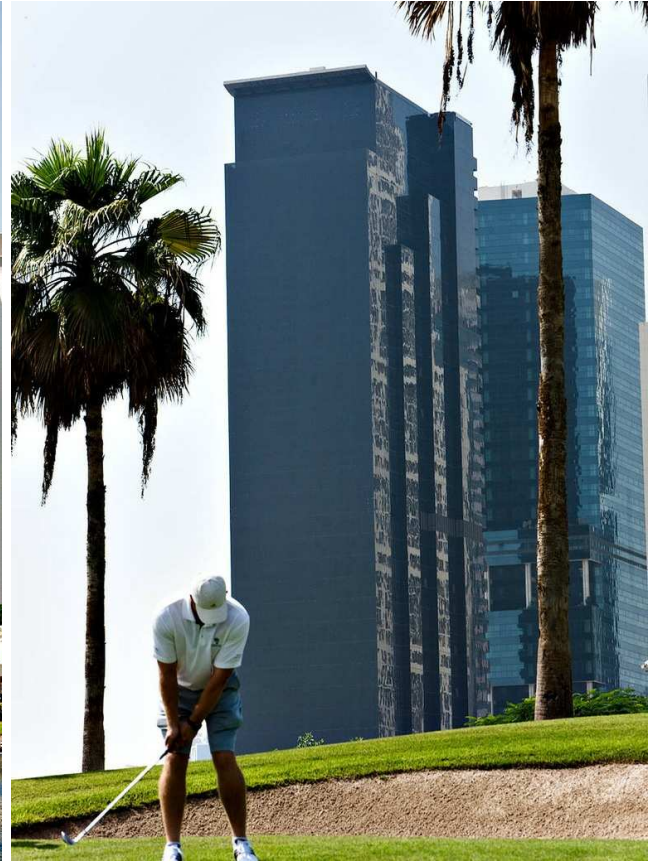
Views of Landmarks such as Burj Al Arab, and The Palm Jumeirah

Grand lobby with 5 floor high atrium ceiling and marble finishing

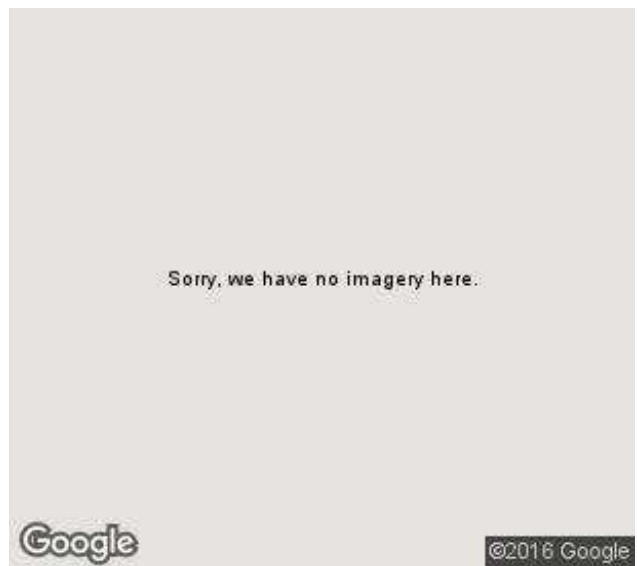
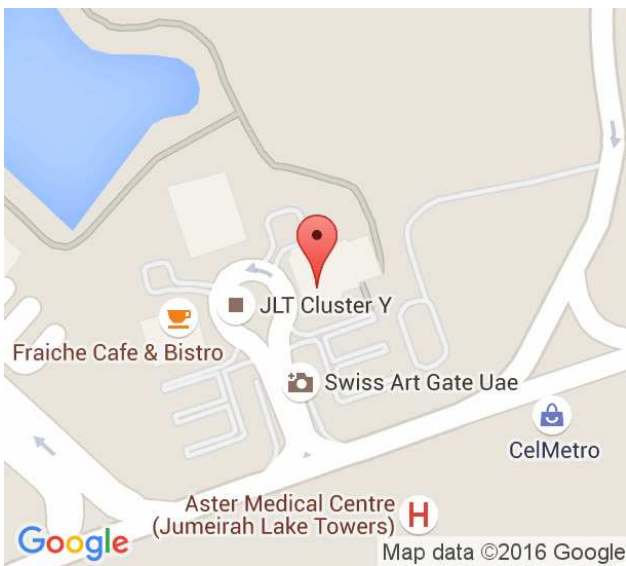
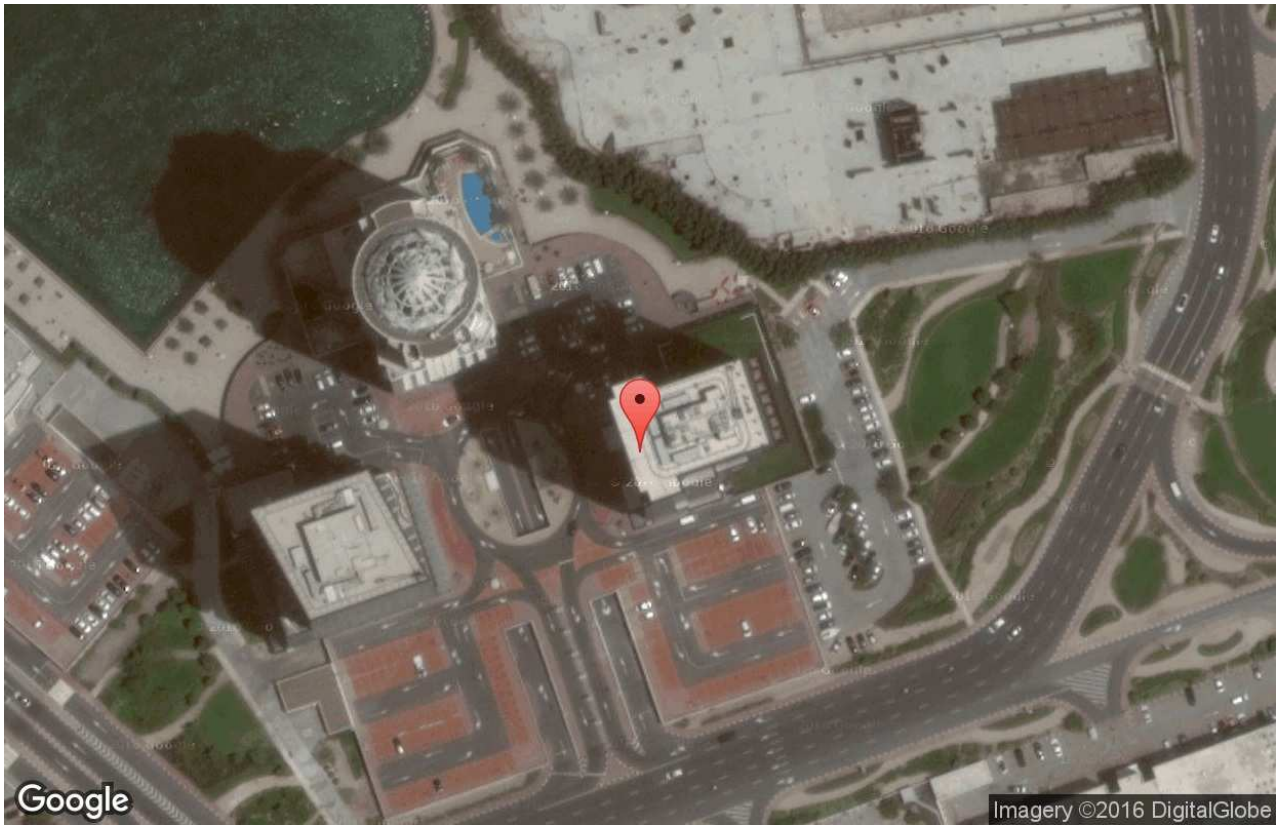
Retail area within the building, cafes and restaurants

24 Hour security

Valet services



JBC 3, Cluster Y, JLT, Jumeirah Lake Towers, Dubai - United Arab Emirates



Data provided by Google

Unit	Floor	Sq ft	Sq m
401	4	2,677	248.8
402	4	1,103	102.5
403	4	1,185	110.1
404	4	1,185	110.1
405	4	1,109	103.1
2101	21	2,679	249.0
2102	21	1,103	102.5
2103	21	1,359	126.3
2104	21	1,359	126.3
2105	21	1,103	102.5
2106	21	2,679	249.0
2107	21	1,032	95.9
Total size	18,573	1,726.1	

Notes:



JLL Dubai



toby.hall@jll.com

Property descriptions and related information displayed on this page are marketing materials provided by JLL. Realla does not warrant or accept any responsibility for the accuracy or completeness of the property descriptions or related information provided here and they do not constitute property particulars. JLL Disclaimer JLL for themselves and for the vendors or lessors of this property whose agents they are, give notice that:- a. the particulars are set out as a general outline only for guidance and do not constitute, nor constitute part of, an offer or contract; b. all descriptions, dimensions, references to condition and necessary permissions for use and occupation, and other details are believed to be correct, but any intending purchasers, tenants or third parties should not rely on them as statements or representations of fact but satisfy themselves that they are correct by inspection or otherwise; c. no person in the employment of JLL has any authority to make or give any representation or warranty whatever in relation to the property; d. Any images maybe computer generated. Any photographs show only parts of the property as they appeared at the time they were taken @2015 Jones Lang LaSalle